

2022



*All of Europe  
animated in miniature!*

GROUPS AND COMPANIES

PARTNER  
visit.brussels 

**BRUPARCK!**  
*Brussels*

# Amazing!

A two-hour walk, that is both entertaining and educational, to learn about the member states of the European Union and the United Kingdom, their historical, architectural and cultural wealth.



*The Cathedral of Santiago  
de Compostela (Spain)*

# *Spectacular!*

Be amazed!

Mini-Europe is a park situated at the gates of Brussels featuring all the wonders of Europe in miniature. Bonsai trees, flowery groves and dwarf trees embellish the 350 monuments and animations which have been meticulously reproduced at scale 1/25. Discover thousands of lifelike figurines and live action animations that look like the real thing!



*Melk (Austria)*



*Siena (Italy)*



*Zagreb (Croatia)*

# *Fun*



An unrivalled  
experience to  
add to your  
memory!





A trip full  
of surprises.



Prepare to be  
surprised by lots  
of live action!

Destroy a section of the Berlin wall, set off the eruption of the Vesuvius, launch an attack of legionnaires or scare the Vikings. Depending on what you fancy, operate the many interactive live action animations, from the Bells of Stockholm to the Windmills at Kinderdijk, to (re)discover Europe as you never have before !



## **HALLOWEEN** *@ Mini-Europe*

**Halloween@Mini-Europe:**  
22/10 > 6/11\*

Mini-Europe in Halloween colours, creative workshops, face painting, fairy tales and odd and frightening creatures. Dress up and come, with family or friends!



## **Christmas** *@ Mini-Europe*

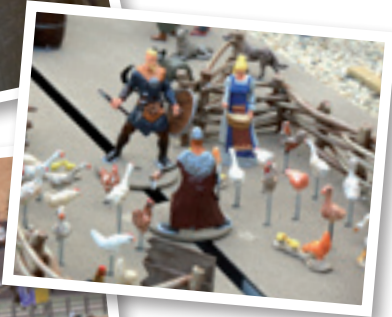
**Christmas@Mini-Europe:**  
7/12/2022 > 8/01/2023\*

Park in Christmas colours and winter wonders. Special illumination.

\* Dates subject to change; full program available on [www.minieurope.eu](http://www.minieurope.eu)

# *Fascinating*

Have fun whilst learning



Behind the captivating universe of the miniature monuments, the dramatization and live action animations, relive **our surprising common history with its values and heritage!** From the origins of democracy to the enterprising spirit, from our Greek, Roman or Viking heritage to the political transformations of the 21st century, you will find commentary at every stage of the journey in the free catalogue that is teeming with information and anecdotes that will delight all children, inquisitives and history fanatics(\*).





The park exhibits more than 350 monuments and animations which were selected for their architectural quality and their European symbolism. They are reproduced to the finest detail. The Cathedral of Santiago de Compostela alone required 24.000 hours of work. Many statues of the Grand-Place of Brussels are painted with real gold leaves. In the Seville arena, 6.000 figurines were placed, one by one, to attend the bullfight. The Big Ben is 4 meters tall. At 13 meters, the Eiffel Tower is taller than a 3-storey building. Yet, all the buildings are on a scale of 1/25.

## *Tailor made!*

**An optional personalised guided tour.** You can book a personalised visit with a professional guide, who will tailor the approach of the visit and the commentary according to your interests or those of your children. Booking required.



**Indoor space.** Located at the end of the park, 'Spirit of Europe' welcomes you into a large indoor space where animated scenes, games and quizzes will give you the chance to test, enrich or perfect your knowledge of the member states of the European Union.



# Complete your day with other activities!

## HOW TO BOOK A COMBINED VISIT?

Before sending in your reservation form, please verify the availabilities of the chosen activity. Once this has been done, send us your reservation specifying the day and hour of the combined visit. Mini-Europe will send you a confirmation summarising all of the services and will confirm your choice with the other combined visits.

## AROUND MINI-EUROPE

HEYSEL

### ATOMIUM / DESIGN MUSEUM BRUSSELS

Essential symbol of Brussels and Belgium. Surrealistic visit through tubes, spheres and sound & light installations. Breathtaking 360° panoramic view on Brussels (92 m). Panoramic Restaurant (95 m). In addition to the permanent exhibition dedicated to the history of the Atomium and Expo 58, there are also temporary exhibitions. The entrance ticket automatically includes the entrance to the Design Museum Brussels, located at 150 m.

Open 365/365-10 h-18 h (last entrance is at 5.30 pm).

**Bookings (min. 2 weeks in advance) :**

**T +32(0)2/475 47 67 - [rukiye.yildiz@atomium.be](mailto:rukiye.yildiz@atomium.be)**

**Info. and bookings : Place de l'Atomium 1, B-1020 Brussels**

**T +32(0)2/475 47 75 - F +32(0)2/475 47 79**

**[info@atomium.be](mailto:info@atomium.be) - [www.atomium.be](http://www.atomium.be)**



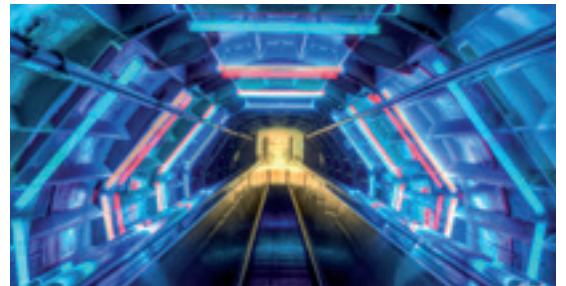
**atomium**



**DESIGN  
MUSEUM  
BRUSSELS**

Supported by Atomium

The only museum and art centre in Brussels, dedicated to design and art from the XXth century until today.



### PLANETARIUM THE UNIVERSE IN THE HEART OF THE CITY !

Try something completely different and immerse yourself in a virtual environment, the fascinating images are projected on the dome covering 840 m². Travel right into the midst of planets and stars, fly above Mars or even approach the rings of Saturn! And why would we stop there? Do you dare to go beyond the limits of the solar system, even the Milky Way! Would you be tempted to explore the extremities of the Universe? School groups can benefit from special lessons on seasons, eclipses, Moon phases, provided by our animators.

**Information and bookings : T +32(0)2/474 50 50 - [www.planetarium.be](http://www.planetarium.be)**

### AT KINEPOLIS BRUSSELS YOU EXPERIENCE THE MOVIE LIKE NOWHERE ELSE!

Kinepolis expands the traditional cinema experience to a wider world of film and entertainment, wants to offer its customers the best cinema experience and therefore combines a state-of-the-art cinema infrastructure with an offer tailored to different target groups.

Come and discover a film in the IMAX theatre (with its huge screen of more than 600m², your film will be more powerful, more efficient, more intense) or a 4DX film (innovative technology that offers you the most successful cinema experience, which combines the movements of the seats to special sensory effects such as wind, rain, fog, snow, odors and light in perfect sync with the actions of the film on screen). Le tarif combiné est valable pour les films standards, hors suppléments (cozy seats, 3D, Imax, 4DX, etc.)

**Information and bookings :**

**Boulevard du Centenaire 20, 1020 Brussels - T +32(0)2/474 26 00 - [kinepolis.be](http://kinepolis.be) - [Info@kinepolis.com](mailto:Info@kinepolis.com)**

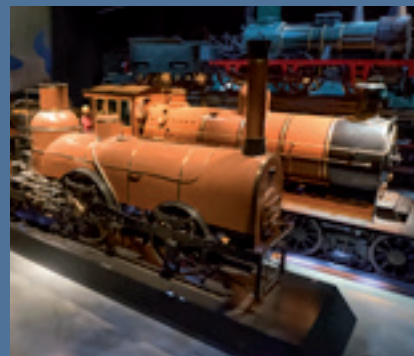
**IMAX**



## 15 TO 25 MINUTES BY CAR/COACH FROM MINI-EUROPE

### TRAIN WORLD

Train world is a unique rail experience that will take you from the very first steam locomotives to highspeed trains! It's a universe that calls on all the senses to understand the railways in its multiple dimensions. It is an active outing for all ages. Walk among the locomotives, climb aboard 100 year old trains, visit a small railway house and cross a genuine railway bridge. You can even experience what it feels like to drive a train!



**Info and bookings : Place Princesse Elisabeth, 5 - 1030 Schaerbeek**  
**Tram: Line 7 - T +32(0)2/224 75 88**  
**reservations@trainworld.be - www.trainworld.be**

### BREWERY TIMMERMANS

Timmermans has brewed lambic in Itterbeek for the last 300 years, ever since 1702. A few miles from the center of Brussels, it was then known as "The Mole Brewery". Owned by Jan Vandermeulen, it was also a farm, an orchard, a café and a malt-house. Elected "World's Best Sour Beer" at the prestigious World Beer Awards 2015, Timmermans Oude Gueuze can take pride in this recognition of the quality of its lambics. Come and discover how it is brewed !

**Information and bookings :**

**Brewery Timmermans - Kerkstraat 11 - 1701 Itterbeek**

**T +32(0)2/569.03.57 - timmermans@johnmartin.be - www.brtimmermans.be**



## IN THE HEART OF BRUSSELS

## CENTER

### A DAY WITH "THE BRUSSELEIRS"

- **10:00 am** : Visit of Mini-Europe (without guide) or the Timmermans Brewery (2 tastings included).
  - **12:00 am** : Meal of choice (see page 11 or free).
  - **01:30 - 02:00 pm** : Departure for the guided visit of Brussels with your coach (and by foot) for those that visited Mini-Europe in the morning. Visit of Mini-Europe for the beer enthusiasts
  - **03:30 pm** : Discovery of Brussels with your coach (and by foot) for the beer enthusiasts.
  - **04:15 pm** : Discovery of the chocolate activity for those who visited Mini-Europe in the morning. (Planète Chocolat or Choco Story)
  - **05:30 - 06:00 pm** : Free time and end of the day.
- > Rate: € 140 /coach for the guide in the afternoon + price of the combination (page 15) which varies according to the chosen activity and the kind of group + chosen meal.  
Example with the Timmermans Brewery based on 40 participants :  
 € 43,30 /adult - € 42,20 /65+ (Menu 2 included  
 or € 24,80 /Adult € 22,70 /65+ (without meal) - base of 40 pers.  
 Transportation costs are not included.
- > The Timmermans Brewery can also be visited later in the day.
  - > The chocolate activity can be moved up in case of unavailability at ± 04:15 pm.
  - > The chocolate and beer activity can be replaced by the visit of the Atomium.
  - > Reduction for children.
  - > The timetables are given as an indication and can be adjusted on request

**Information and bookings :**

**Mini-Europe - BRUPARCK - 1020 Brussels**

**T +32(0)2/474.13.13**

**info@minieurope.eu - www.minieurope.eu**



## PLANÈTE CHOCOLAT

**Welcome to Planète Chocolat!** Your guests will attend a **Live Chocolate Show** (± 30 minutes) whilst being seated comfortably. This will explain the origin of cacao as well as the composition and production process of chocolate with the active participation of the audience. This is followed by a practical explanation of the molding of pralines. This will all happen around the artisanal production workshop - your guests can therefore see the Master Chocolatiers at work while they attend the show. Each visitor will receive individually packed pralines to taste at home. Good news for your invitees: the degustation will be adjusted following the liturgical calendar (during the Christmas period they will receive chocolate Christmas figurines).

### Information and bookings :

Rue du Lombard, 24 - 1000 Brussels

T +32(0)2/511 07 55 - F +32(0)2/512 13 05

planetechocolat@skynet.be - [www.planetechocolat.com](http://www.planetechocolat.com)



## GUIDED VISIT THROUGH BRUSSELS



Departure with your coach to discover Brussels and its architectural patrimony. A visit which will surprise everyone. This route includes a guided visit (by foot) to the Grand-Place and the surrounding area (Royal Galleries, Ilot Sacré, Manneken Pis). €140 /coach.

**Guided pedestrian tour of the European area : €140/25 pers.**  
**Information and bookings : Mini-Europe.**

## CHOCOSTORY

Take a dive in the universe of cocoa and chocolate, pass a Maya temple where cocoa beans have been consumed 5000 years ago, step aboard the boat of Cortez who imported the cocoa beans in Europe; discover how chocolate was being used at the French Court in the 17th Century and afterwards how the "praline" was crafted beginning of the 20th Century in Belgium. The cocoa culture and its transformation won't have any secrets left for you. Demonstration, tasting and audio guide are included in the visit.



### Information and bookings:

Rue de l'Étuve 41, 1000 Brussels - T +32(0)2 514 20 48

info@choco-story-brussels.be - [www.choco-story-brussels.be](http://www.choco-story-brussels.be)

## BRUSSELS - IN THE HEART OF THE EUROPEAN QUARTER

**Information and bookings: [visit@europarl.europa.eu](mailto:visit@europarl.europa.eu) - [www.europarl.europa.eu/visiting](http://www.europarl.europa.eu/visiting)**

## EUROPEAN PARLIAMENT : THE HEART OF EUROPE'S DEMOCRACY

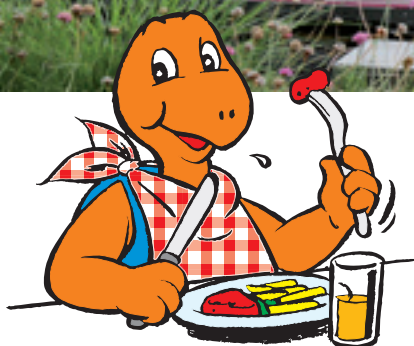
How does the European Union work? How can you make your voice heard? Visit the Hemicycle, the Parliamentarium and the House of European History to discover all about it. With a whole range of interactive and immersive activities, you dive into the history of Europe and learn more about the creation of European laws and their impact on your daily life.

**FREE**

**Available in 24 languages**



# When all this travelling makes you hungry!



Mini-Europe's restaurant offers you a number of delicious possibilities. With a seating capacity of 250, Mini-Europe's restaurant is the biggest in Bruparck, offering something for everyone's taste and budget. Groups of 20 persons minimum can enjoy a meal according to one of the following options:

1. The self-service option in which individuals and groups can enjoy a warm snack or drink in complete relaxation.
2. "Special menus" for groups. Only by reservation 1 month before date of visit.

For further information or other suggestions, please contact us. **Please choose one type of menu for the whole group.** Children accompanying parents can have nuggets with French fries, 1 ice lolly and 1 soft drink 30 cl. for the price of the Menu Junior 1.



## SNACK SUGGESTION

€ 5.50

A slice of pie  
Coffee, tea or hot chocolate

## ALL INCLUSIVE PRICE

€ 6.50

Water, beer, non-alcoholic drinks or wine for unlimited drinks during the suggested menus

(Aperitif included (kir, wine) €9.40)

### MENU 1

€ 21.90

Tomato with North Sea shrimps  
«Breughel» rib steak, chips and salad  
Piece of cake - Coffee - 1 drink

### MENU 2

€ 19.50

Ham of the Ardennes  
Flemish carbonade chips and salad  
Ice cup  
Coffee - 1 drink

### MENU VEG

€ 11.20

Vegetarian steak with tomato sauce, chips  
Piece of cake, Coffee, 1 Drink  
  
Soup (+ €4)

### MENU 3

€ 19.50

"Terrine de pâté" from the Ardennes  
Breaded veal (escalope)  
Pasta with Provençal sauce  
Piece of cake - Coffee - 1 drink

### MENU 4A-4B

€ 16.90

Soup  
4A Vol-au-vent or\*  
4B meatballs with tomato sauce chips,  
Piece of cake  
Coffee - 1 drink (\*1 choice/group)

### JUNIOR 1

€ 8.90

(for those under 12)  
Spaghetti Bolognese  
1 Ice lolly  
1 soft drink 30 cl.

### MENU 5

€ 13.20

Chicken breast filet, tomato sauce, chips and salad  
Coffee - 1 drink

### MENU 6

€ 13.00

2 kinds of bread  
4 kinds of cold cuts  
3 kinds of cheese  
Jam, butter  
Coffee, tea, hot chocolate

### JUNIOR 2A-2B

€ 9.40

(for those under 12)  
J2A Vol-au-vent, or\*  
J2B meatballs with tomato sauce, chips, 1 Ice lolly  
1 soft drink 30 cl. (\*1 choice/group)

*...especially for schools!*



## THE EDUCATIONAL TOOLS PUT AT YOUR DISPOSAL

- An **educational pack**\* with plenty of information for the teacher and exercises for students (available in French and Dutch). To be printed out, available on [www.minieurope.eu](http://www.minieurope.eu)
- A **catalogue**, your personal guide to the park. One for every teacher. Available in English and 10 other languages.
- A **workbook** for students\* available in English, German, French and Dutch (to be printed out, available on [www.minieurope.eu](http://www.minieurope.eu)).



Your students become real explorers amidst the most beautiful buildings of the European Union. This trip can be perfectly combined with geography, history, culture and language courses.



## THE EDUCATIONAL PROGRAMMES

**1. A guided visit\*** (duration: 2h00, no limit of age). In English or other language. The guide gives you an enthusiastic explanation with many anecdotes of Mini-Europe, sharing his or her knowledge of the cities and monuments which have been important for Europe.

OPTION: Thematic visit : visit the park and identify the different architectural styles (to ask at the booking).

**2. The Europoly\*** (duration: 2h00, 10 to 14 years). Discover the European Union (its advantages, the reasons for the enlargement, the euro, the institutions, etc.) as well as important issues concerning the European Union. This interactive game is animated in the park. Available in French or Dutch.

\* The activities can change without prior notice



### BOOK YOUR VISIT NOW AND RECEIVE YOUR DISCOVERY PASSPORT FOR 2022

by sending us a written reservation of your visit to Mini-Europe before May 9th 2022 (Europe Day).

This pass will grant you and your family (max 5 persons) free access to great theme parks such as Mini-Europe, Pairi Daiza, Sea Life, Historium (one Profpass for every 15 paying students, given on the day of your arrival).

### WE WANT YOU TO FEEL RELAXED !

- Easy access by train, metro, bus.
- A car park.
- A picnic area (picnickers are obliged to buy at least 1 drink per person).
- Snacks.
- Ideas for activities to complete the day (read pages 8>10)

# *Your company events: Welcome your guests in a unique setting!*



Rented out completely or partially, Mini-Europe is “the ideal site” for organizing your events. For your

- staff parties;
- seminars;
- cocktail parties;
- family days;
- presentation of products.

we offer :

- a catering service which can fulfil your gastronomic desires (not obliged);
- 4 modulable spaces which can be personalised according to your wishes;
- a central location which is easy to access in the capital of Europe;
- a flexible team which can realise your wildest dreams !

**A few references:** Stepstone, Electrabel, D’leteren, Jet Air, Toro, GlaxoSmithKline, Fiat, Ecolab, Belgacom, Roche, Siemens, Brussels Export, Procter&Gamble, Ligue Braille, Generali, Hilton Hotel, Schindler, Nationale Bank, BNP PARIBAS FORTIS, Swissport, DHL, Thomas Cook,...

For renting halls, an exclusive visit, a gastro-nomic proposal, a detailed estimation for your event or full information on the numerous possibilities offered contact the event department.

**Info : [yourevent@minieurope.eu](mailto:yourevent@minieurope.eu)  
or 02/474.13.13.**

Capacity room	Seminar / Conference	Cocktail	Banquet	Surface (m²)
RESTAURANT	-	375	230	250
COVERED TERRACE	-	260	160	220
JACQUES DELORS*	100	150	80	100
SPIRIT OF EUROPE	-	200	-	300

\* the J. Delors Hall has an uncovered terrace of 175 m2 with view of the park and the Atomium.

# A tour around Europe at the best price!



Group price 2022* (Min. 20 persons)	Nursery Schools	Schools -> 18 years Youth groups -> 16 years Disabled (min. 10)	Adults	+ 65 years
	€	€	€	€
Mini-Europe	6,30	8,40	14,30	13,00
Mini-Europe + Atomium (Design Museum incl.)		13.10	25.40	20.60
Mini-Europe + Choco Story Brussel (Chocolate museum)		12.20	19.80	17.70
Mini-Europe + Planète Chocolat (Chocolate workshop)		14.35	20.10	17.35
Mini-Europe + Planetarium		11.70	17.80	15,70
Mini-Europe + Kinépolis** Brussels		17.70	23.25	20.70
Mini-Europe + Timmermans Brewery		16.20	21.30	19.20
Mini-Europe + Train World		12.30	22.00	18.90
Mini-Europe + European Parliament		8.40	14.30	13.00
Mini-Europe + Atomium (Design Museum incl.) + Planetarium		17.10	30.40	25.60
Mini-Europe + Atomium (Design Museum incl.) + Planète Chocolat		19.75	32.70	27.25
A day with the Brusseleirs	The choice of your combined ticket + €140 for the guide for the whole afternoon (3 hours)			
Free		1 person + 1 catalogue /15 paying	1 person/coach + 1 catalogue/pers.	1 person/coach + 1 catalogue/pers.
<b>Individual prices 2022*</b>		<b>Children (&lt;12y) (&lt;1m15 = FREE)</b>	<b>Adults</b>	<b>+ 65 years</b>
Mini-Europe		12.30	17.30	17.30
Mini-Europe + Atomium (Design Museum incl.)		18.70 (<12y) / 22.80 (12y to 18y)	29.40	27.70
Mini-Europe + Planetarium		16.30	21.90	19.90
Mini-Europe + Kinépolis** Brussels		22.30	26.40	25.90

(\*) Prices and opening periods can change without prior notice. (\*\*) Prices for standard films excluding supplement (cozy seats, 3D, Imax, 4DX, etc.)

**Remarks:** Meal and transportation costs are not included in the price of our day programme. The total amount has to be paid at the cash desk in €, Bancontact/Mistercash/Visa/Eurocard-MasterCard.

## Optional programs

Guided visit (2h): €85 supplement for max. 25 persons

Europ-oly (2h): €85 supplement for max. 25 persons

Guided visit through Brussels: €140/coach for 3 hours

Pedestrian tour in the European district: €140/25 persons

## To book your group excursion

• Either book on line: <http://www.minieurope.eu/en/groups/bookings/>

• Or download the booking form, fill it in and send it to us without delay. : <http://www.minieurope.eu/en/documents/>



## OPENING HOURS 2022\*

(\*) (last entry : 1 hour before closing of the park)

From 26/03/2022 to 30/06/2022	From 9:30 am to 6:00 pm(*)	5:00 pm
From 01/07/2022 to 31/08/2022	From 9:30 am to 7:00 pm(*)	6:00 pm
From 01/09/2022 to 30/09/2022	From 9:30 am to 6:00 pm(*)	5:00 pm
From 01/10/2022 to 08/01/2023	From 10:00 am to 6:00 pm(*)	5:00 pm
24 and 31/12/2022	From 10:00 am to 5:00 pm(*)	4:00 pm

Annual closure : 09/01/2023 > 24/03/2023

(\*) Prices and opening periods can change without prior notice.

Closing hour  
cash desk

## CATALOGUE IN 11 LANGUAGES

CN DE EN ES FR HE IT NL PL PT RU

## MINI-EUROPE

Bruparck - B-1020 Brussels  
Infoline : +32 (0)2 478.05.50  
T +32 (0)2 474.13.13 - F +32 (0)2 478.26.75  
E-mail : info@minieurope.eu  
Visit our website : [www.minieurope.eu](http://www.minieurope.eu)

**INFO AND BOOKINGS : T +32(0)2/474.13.13**



MiniEuropeOfficial

THANKS TO



## HOW TO REACH ?

### BY COACH :

Brussels ring road - Exit 8: "Heysel-Wemmel", follow the "Bruparck" arrows.  
Cash desk and entrance are located in Bruparck.  
GPS : Avenue du Football crossing with Avenue de Bouchout

### BY TRAIN :

To «Bruxelles-Midi/Zuid», then metro line 6 in the direction of «Roi Baudoin», get out at «Heysel» and follow the «Bruparck» arrows.

### PUBLIC TRANSPORTS :

**Heysel** : Metro 6, Tram 7, Bus 83  
**Saint-Lambert** : Tram 19  
**Stadium** : Tram 9, 51, 93  
**De Lijn** : 240, 241, 242, 243, 250, 251, 260